



INDEPENDENTLY, SAFELY
AND WITH CHOICE

VILLA SNAPSHOT



3



3



1



2



FERNTREE GULLY- MELBOURNE

- Located on the footsteps of the Dandenong Ranges
- Established suburb with great infrastructure, public transport and amenities
- An abundance of parks and reserves located within this leafy suburb.



[Connectedlivingsolutions.com.au](https://connectedlivingsolutions.com.au)

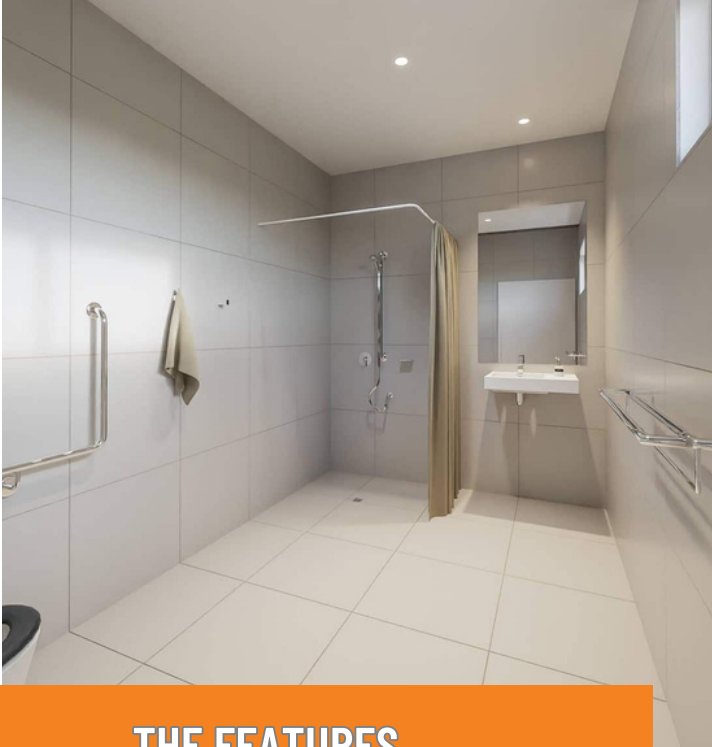
2 PARTICIPANT HPS VILLA

*Promoting independence through
the use of assistive technology*

**Your New Home Awaits in
March 2024**

CLICK HERE to apply!
Ref: SD-2024-02





THE FEATURES

Designed as a High Physical Support property, this resilient residence surpasses conventional standards, delivering not just a dwelling but an authentic home tailored for its tenants.

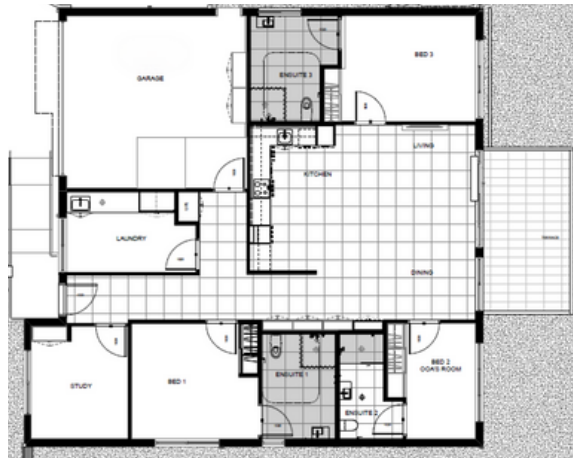
- ✓ Ensuites in all bedrooms
- ✓ Cooling & Heating in all rooms
- ✓ Accessible kitchen to promote independence
- ✓ Modern open plan living

LIFESTYLE



ACCESSIBLE KITCHEN

This villa enhances kitchen accessibility through an electric height-adjustable benchtop seamlessly integrating the sink and stove top.



CONTACT US :



(03) 9863 6823



84 Hotham Street
Preston, Victoria 3072



connectedlivingsolutions.com.au



Support@connectedlivingsolutions.com.au

